



# Daily Situation Summary

## Wednesday, October 7, 2020

### As of 10:00 AM

#### COVID-19 by the Numbers

10/7/2020	Riverside	Imperial*	Kern	Los Angeles	Orange	San Bernardino	San Diego	San Luis Obispo	Santa Barbara	Ventura	California	United States	Global
Total Cases	60,454	11,169	31,933	273,200	54,103	55,100	48,662	3,710	9,309	13,224	828,461	7,436,278	47,267,669
New Cases	203	42	27	378	137	0	224	22	33	27	1,677	39,548	317,297
Total Cases Per Capita	2,537	6,198	3,616	2,705	1,710	2,580	1,473	1,318	2,098	1,559	2,116	2,251	615
New Cases Per Capita	8.52	23.31	3.06	3.74	4.33	0.00	6.78	7.82	7.44	3.18	4.28	11.97	4.13
Recovered	<a href="#">55,397</a>	<a href="#">11,493</a>	<a href="#">16,463</a>	<a href="#">Not Reported</a>	<a href="#">49,141</a>	<a href="#">53,735</a>	<a href="#">44,341</a>	<a href="#">3,536</a>	<a href="#">9,107</a>	<a href="#">12,287</a>	<a href="#">431,371</a>	<a href="#">4,950,124</a>	<a href="#">27,215,342</a>
Total Deaths	1,238	326	386	6,654	1,287	962	803	31	115	154	16,177	209,560	1,302,834
New Deaths	7	0	0	7	1	0	0	0	0	1	28	361	5,912
Deaths Per Capita	51.95	180.89	43.71	65.89	40.67	45.05	24.31	11.01	25.92	18.16	41.32	63.43	16.95
Presumptive active cases	3,819	-650	15,084		3,675	403	3,518	143	87	783	380,913	2,276,594	18,749,493
% of State's Cases	7.30%	1.35%	3.85%	32.98%	6.53%	6.65%	5.87%	0.45%	1.12%	1.60%	<a href="#">11.14%</a>	<a href="#">15.73%</a>	
Currently in Hospitals	209	27	66	1,035	228	239	273	3	19	45	3,175		
Total Hospital Beds	3,390	259	1,335	19,975	5,698	3,844	6,773	451	666	1,227	66,925		
Currently in ICU	42	10	16	195	63	50	66	0	6	14	681		
ICU Beds Available	115	2	67	1,040	210	169	313	28	62	56	2,960		
Case Fatality Rate	2.048%	2.919%	1.209%	2.436%	2.379%	1.746%	1.650%	0.836%	1.235%	1.165%	1.953%	2.818%	2.756%
Population*	2,383,286	180,216	883,053	10,098,052	3,164,182	2,135,413	3,302,833	281,455	443,738	848,112	39,148,760	<a href="#">330,368,050</a>	<a href="#">7,685,133,000</a>
% of Population	6.09%	0.46%	2.26%	25.79%	8.08%	5.45%	8.44%	0.72%	1.13%	2.17%	<a href="#">0.25%</a>	<a href="#">0.0968%</a>	

Sources: CDPH, WHO, CDC

The date for which case statistics and hospital data were reported. Hospital COVID data are self-reported through a portal managed by the California Hospital Association and pulled at 2pm. COVID case statistics are reported by local health departments to CalREDIE and are pulled at 2pm. Hospital data and case statistics are integrated by the California Department of Technology and made available through the Open Data Portal the following morning. CA Open Data Portal is at least 24 Hours behind although a backlog of new case reports at the State level has ostensibly been cleared, some County dashboards still contain notes that indicate data are missing. \*California-Demographics.com made by Cubit – a demographic data provider & census.gov

Presumptive active cases - A calculation (Total Cases - Recovered - Dead) (LA County does not report recovery rates and \*Imperial County case data reporting is delayed to the state data source)

#### News

More detail on page 2

#### US Data

More detail on page 5

#### State Data

More detail on page 8

#### Riverside County Data

More detail on page 13

#### Weather

More detail on page 14

#### Wildfire

More detail on page 15

**News** – The collection of news articles is related to COVID-19. The inclusion or order of articles is not intended to reflect their importance, nor is it intended to endorse the political viewpoints or affiliations included in news coverage.

### **Busy Damascus cemetery points to higher pandemic death toll in Syria**

- Najha cemetery outside Damascus, resting place for thousands of dead from Syria's wars, is struggling to cope with a surge in victims from the country's latest conflict - the largely unacknowledged battle with COVID-19.
- Najha cemetery, the designated site for COVID-19 victims in the Syrian capital, usually handles around 40 burials a day.
- That number more than tripled during most of July and there was a spike in August, and the numbers remain well above average, said Abdul Rahim Badir, who issues burial certificates at Najha.

<https://www.reuters.com/article/us-health-coronavirus-syria-capital/busy-damascus-cemetery-points-to-higher-pandemic-death-toll-in-syria-idUSKBN26S1VG>

### **After months of confidence, Netherlands wakes up to Covid surge**

- Until recently, the Netherlands was so comfortable with its test-and-trace plan for a second wave of coronavirus infections that it thought there was no need to make people wear face masks.
- But in the past month, a surge in new cases has catapulted the per capita infection rate into the top 10 in the world, with a weekly infection rate of around 160 per 100,000 population, as that plan has run into trouble.
- On Wednesday, the Dutch parliament was debating an emergency law that would give government the power to make masks mandatory in public places if it chose to, as the daily rate of new infections reached a new record high of nearly 5,000.

<https://www.reuters.com/article/us-health-coronavirus-netherlands/after-months-of-confidence-netherlands-wakes-up-to-covid-surge-idUSKBN26S251>

### **Italy makes face masks mandatory as coronavirus cases surge**

- Italy on Wednesday made it mandatory to wear face masks outdoors nationwide in an effort to curb the spread of the coronavirus, as new infections jumped to the highest daily tally since April.

<https://www.reuters.com/article/us-health-coronavirus-italy-masks/italy-makes-face-masks-mandatory-prolongs-covid-state-of-emergency-idUSKBN26S1ZR>

### **Brussels bars and cafes to close as COVID-19 cases resurge**

- Bars and cafes in Brussels will be forced to close for a month from Thursday, the regional government said on Wednesday after the Belgian capital overtook Paris in terms of COVID-19 infections per inhabitant.
- Brussels is second only to Madrid among the European Union's 27 capital cities, Belgian health authorities said on Wednesday, with 502 coronavirus cases per 100,000 residents over the past two weeks.

<https://www.reuters.com/article/us-health-coronavirus-brussels/brussels-bars-and-cafes-to-close-as-covid-19-cases-resurge-idUSKBN26S1VM>

### **Brazil military fly doctors to test Amazon tribe for COVID-19**

- The Brazilian military wrapped up on Monday a three-week operation that provided medical care to the Amazon's Guajajara tribe hit by COVID-19, in response to criticism that Brazil was not protecting vulnerable indigenous people from the pandemic.

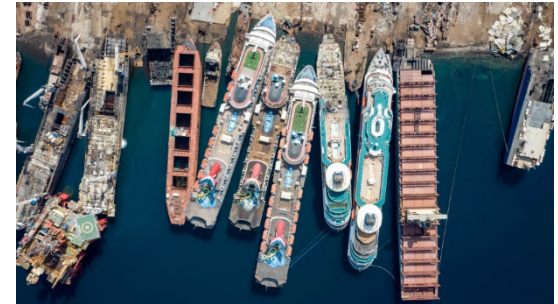
- The Defense Ministry said its doctors did 37,000 checkups since Sept. 24 and supplied 39 tonnes of medicine, food and protective equipment to the Guajajara, a tribe that lives on several reservations in the rainforest of Maranhão state.

<https://www.reuters.com/article/us-health-coronavirus-brazil-indigenous/brazil-military-fly-doctors-to-test-amazon-tribe-for-covid-19-idUSKBN26Q1YK>

## **Cruise ships torn apart after coronavirus sell off**

- On the beach, once-gleaming vessels lie dilapidated, their innards exposed, barely recognizable from their seafaring glory days.
- These huge ships were previously the pride of cruising fleets including Carnival Cruise Line. Now they're shells of their former selves -- beached at Aliaga shipyard in Turkey, mid-demolition and ready to be sold for scrap.

<https://www.cnn.com/travel/article/cruise-ship-demolition-photos-aliaga-turkey/index.html>



## **How Much Would Trump's Coronavirus Treatment Cost Most Americans?**

- President Donald Trump spent three days in the hospital. He arrived and left by helicopter. And he received multiple coronavirus tests, oxygen, steroids and an experimental antibody treatment.
- For someone who isn't president, that would cost more than \$100,000 in the American health system. Patients could face significant surprise bills and medical debt even after health insurance paid its share.
- Across the country, patients have struggled with both the long-term health and financial effects of contracting coronavirus. Nearly half a million have been hospitalized. Routine tests can result in thousands of dollars in uncovered charges; hospitalized patients have received bills upward of \$400,000.

<https://news.yahoo.com/much-trumps-coronavirus-treatment-cost-130318676.html>

## **IKEA gets sales boost from shoppers' new stay-at-home focus**

- IKEA sees sales returning to growth this year after the coronavirus crisis boosted shoppers' interest in spending more on their homes, a trend the world's biggest furniture retailer believes is here to stay.

<https://www.reuters.com/article/us-ikea-sales/ikea-gets-sales-boost-from-shoppers-new-stay-at-home-focus-idUSKBN26R233>

## **Newsom warns second COVID-19 wave in other countries could hit California**

- California Gov. Gavin Newsom said Monday the COVID-19 pandemic is stable in California, but the situation could change, with a rise in cases across this country signaling the potential for a second wave of cases in the Golden State.
- "In fact, as of this morning, 21 states have seen an increase in transmission rate of COVID-19," Newsom said. "We're seeing this, by the way, not just across the country. You're seeing this increasingly around the world. Take a look at the headlines in France out of Paris today and what's happening in the United Kingdom. What's been happening in Israel and what Germany is projecting and is concerned about."

<https://www.ksbw.com/article/newsom-warns-second-covid-19-wave-in-other-countries-could-hit-california/34289392#>

## California sees no link between K-12 school reopenings and spread of COVID-19

- Dr. Mark Ghaly, the state's top public health official, said Tuesday it can take time for trends to emerge, but so far the results are encouraging.
- "We wanna act responsibly but, so far, it's encouraging to see the tremendous effort and planning that communities and their schools and their staff have done to make sure that it's lower risk for students and staff alike," Ghaly said during a virtual briefing on Tuesday. "We're seeing (those) fruits early on, and I think that's encouraging for all of California."  
<https://abc7.com/california-schools-school-reopenings-reopen-are/6838726/>

## New CA reopening rules require some counties reduce COVID-19 rates in disadvantaged communities

- The California Department of Public Health will now require larger counties to focus on reducing COVID-19 rates in disadvantaged communities, including Black, Latino, and Pacific Islander neighborhoods that have been harder hit by the pandemic. Some are worried that the new equity metric could slow down the state's reopening, but in the Bay Area, it has the potential to help speed things up.
- "We want all of our businesses and our communities to come together to realize that it is so important, both to addressing disparities, and actually to interrupt disease transmission and really address this pandemic head-on," said Dr. Erica Pan, a former Alameda County health officer, who was recently appointed as state epidemiologist.  
<https://abc7news.com/california-equity-reopening-newsom-covid-plan-update/6826784/>

## Riverside County won't stray from state coronavirus business rules

- Riverside County supervisors voted Tuesday, Oct. 6, to try clarifying issues related to the state's COVID mandates for businesses.
- The 4-1 vote — Supervisor Jeff Hewitt was opposed — directs officials to seek clarity on whether group meetings, like the kind held in hotels and conference centers, that primarily involve county residents can take place with limits on attendance. Supervisors also want to know whether wedding receptions can be held with attendance caps.
- <https://www.pe.com/2020/10/06/riverside-county-wont-stray-from-state-coronavirus-business-rules/>

## Blueprint for a Safer Economy – COVID-19 and Equity

<https://www.cdph.ca.gov/Programs/CID/DCDC/Pages/COVID-19/CaliforniaHealthEquityMetric.aspx>

More info under state data

## One Good Thing

- Stories about the kindness of strangers and individuals who sacrifice for others.  
<https://apnews.com/OneGoodThing> & <https://www.goodnewsnetwork.org/>

## Prague cafe hits sweet spot with coronavirus-shaped dessert

<https://www.reuters.com/article/us-health-coronavirus-czech-cake/prague-cafe-hits-sweet-spot-with-coronavirus-shaped-dessert-idUSKBN26S22Q>





# U.S. Data

[https://covid.cdc.gov/covid-data-tracker/#cases\\_casesinlast7days](https://covid.cdc.gov/covid-data-tracker/#cases_casesinlast7days)

**USA**  
**7,436,278**  
**TOTAL CASES**

+39,548 New Cases

CDC | Updated: Oct 6 2020 12:21PM

**USA**  
**209,560**  
**TOTAL DEATHS**

+361 New Deaths

CDC | Updated: Oct 6 2020 12:21PM

**USA**  
**306,970**  
**Cases in Last 7 Days**

CDC | Updated: Oct 6 2020 12:21PM

Cases in Last 7 Days  
by State/Territory

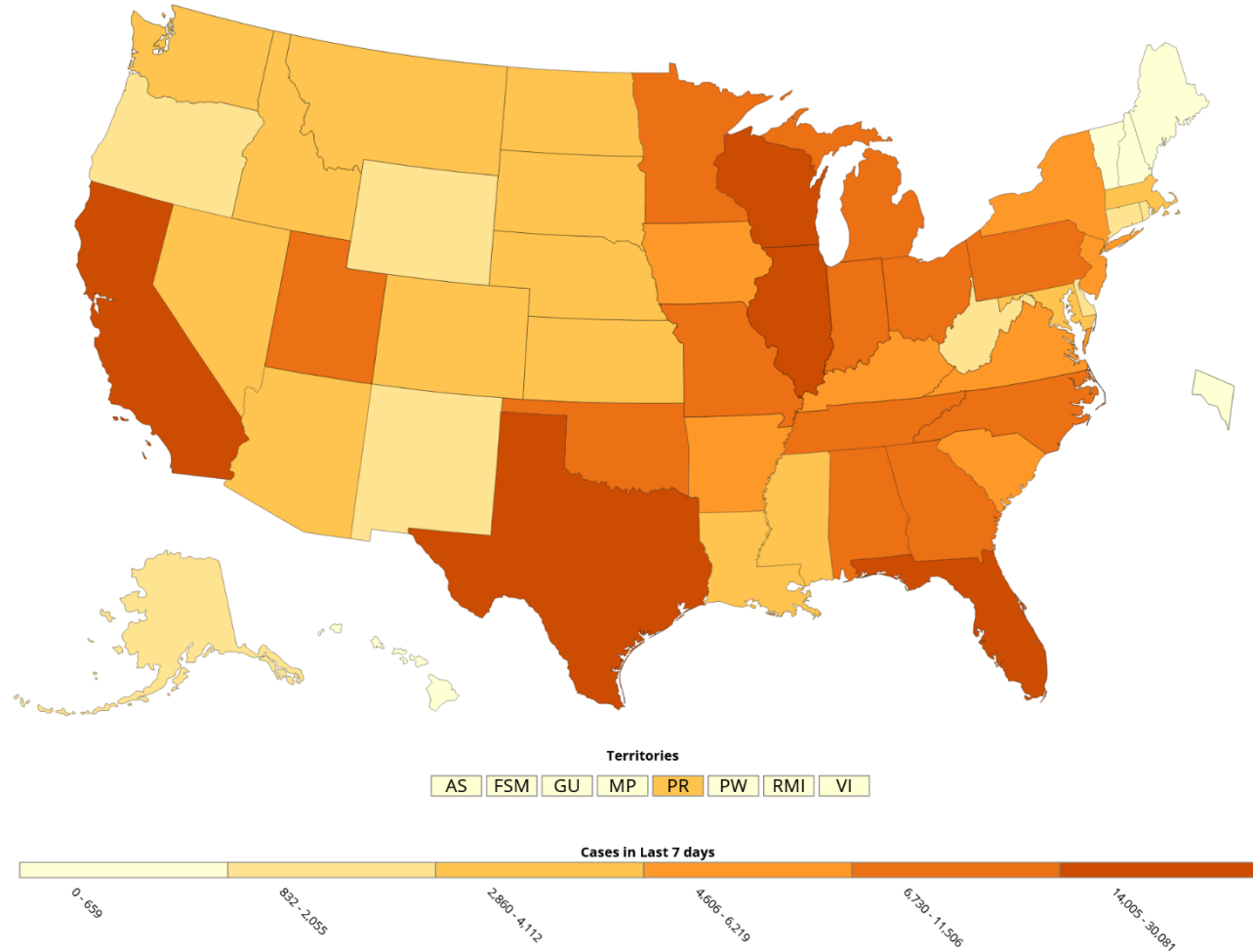
State/Territory	Cases in Last 7 Days
Texas	30,081
California	21,521
Wisconsin	17,438
Florida	16,194
Illinois	14,005
North Carolina	11,506
Missouri	10,142
Tennessee	9,967
Georgia	8,433

CDC | Updated: Oct 6 2020 12:21PM

[View Historic Case and Death Data](#)

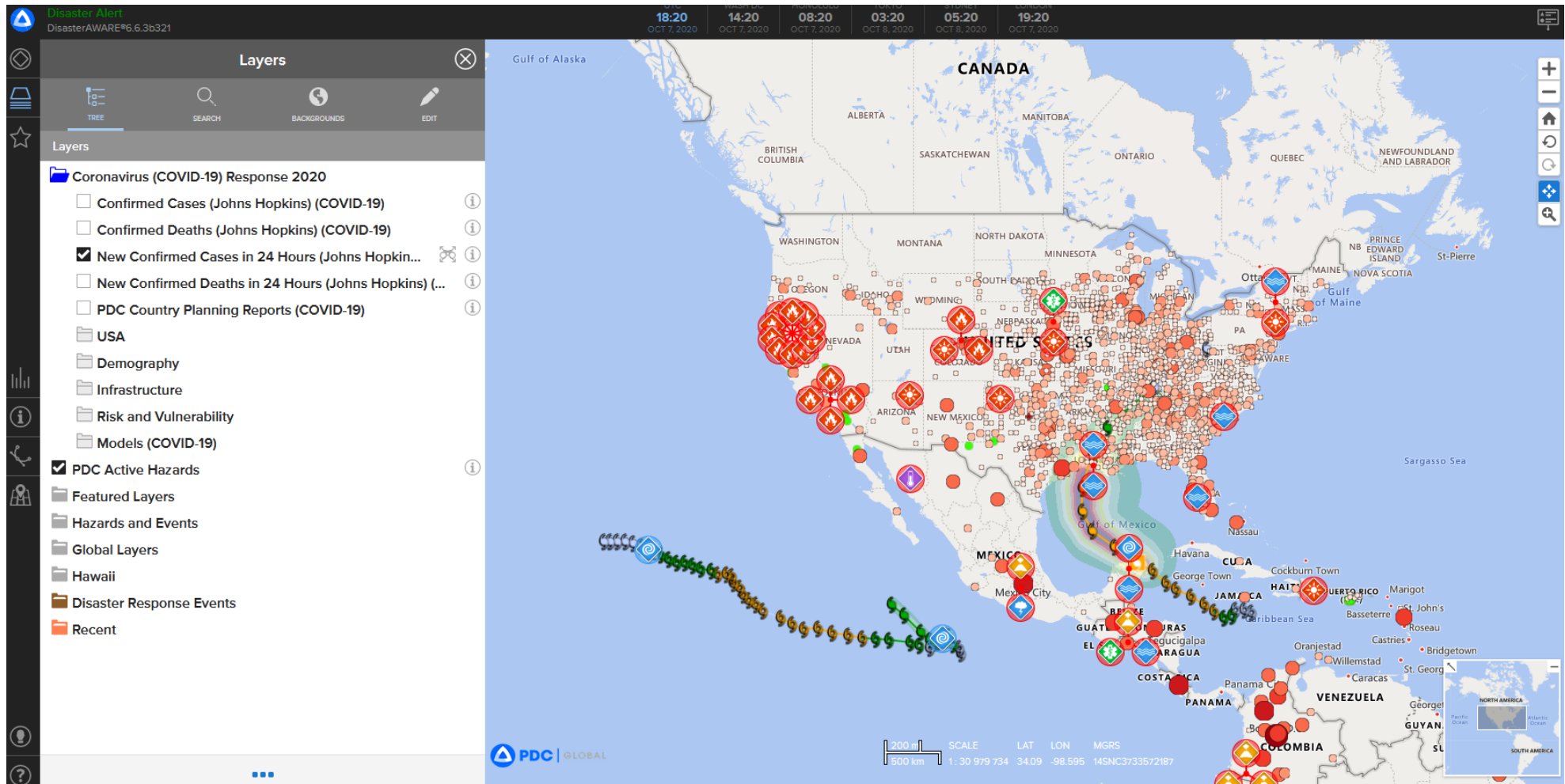
Cases in Last 7 Days   Total Cases   Cases per 100,000   Deaths in Last 7 Days   Total Deaths   Deaths per 100,000

US COVID-19 Cases Reported to the CDC in the Last 7 Days, by State/Territory



[Download Map](#)





## CDC Whats New

<https://www.cdc.gov/coronavirus/2019-ncov/whats-new-all.html>

- [Cases & Deaths by County](#) Wednesday, October 07, 2020
- [EARLY RELEASE: Trends in COVID-19 Incidence After Implementation of Mitigation Measures - Arizona, January 22-August 7, 2020](#) Tuesday, October 06, 2020
- [Cases in the U.S.](#) Tuesday, October 06, 2020
- [COVID-19 Science Update released: October 6, 2020](#) Tuesday, October 06, 2020
- [Travel during the COVID-19 Pandemic](#) Tuesday, October 06, 2020

## CDC Guidance Documents

<https://www.cdc.gov/coronavirus/2019-ncov/communication/guidance-list.html?Sort=Date%3A%3Adesc>

### [Guidance for Reopening Buildings After Prolonged Shutdown or Reduced Operation](#)

Ensure that your water system is safe to use after a prolonged shutdown to minimize the risk of Legionnaires' disease and other diseases associated with water.

Date: 9/21/20

Audience: [Community Settings](#), [Public Health Professionals](#)

### [Interim Laboratory Biosafety Guidelines for Handling and Processing Specimens Associated with Coronavirus Disease 2019 \(COVID-19\)](#)

General and specific biosafety guidelines for handling SARS-CoV-2 specimens.

Date: 9/18/20

Audience: [Laboratory](#)

### [Overview of Testing for SARS-CoV-2 \(COVID-19\)](#)

Summary of considerations and current CDC recommendations regarding SARS-CoV-2 testing.

Date: 9/17/20

Audience: [Health Departments](#), [Healthcare Professionals](#), [State and Local Government](#)

### [Guidance for Reopening Buildings After Prolonged Shutdown or Reduced Operation](#)

Ensure that your water system is safe to use after a prolonged shutdown to minimize the risk of Legionnaires' disease and other diseases associated with water.

Date: 9/17/20

Audience: [Community Settings](#), [Public Health Professionals](#)



# California Takes Action to Combat COVID-19

<https://www.gov.ca.gov/california-takes-action-to-combat-covid-19/>

## State Data

<https://covid19.ca.gov/>

<https://update.covid19.ca.gov/#top>

<https://www.cdph.ca.gov/Programs/CID/DCDC/Pages/Immunization/ncov2019.aspx#>

## “Safer Economy Blueprint”

<https://covid19.ca.gov/safer-economy>

## \*\* NEW UPDATE

## Blueprint for a Safer Economy – COVID-19 and Equity

<https://www.cdph.ca.gov/Programs/CID/DCDC/Pages/COVID-19/CaliforniaHealthEquityMetric.aspx>



Office of Governor  
**GAVIN NEWSOM**

Press Releases, Executive Orders, Media Advisories,  
Proclamations, and “On the Record” Column

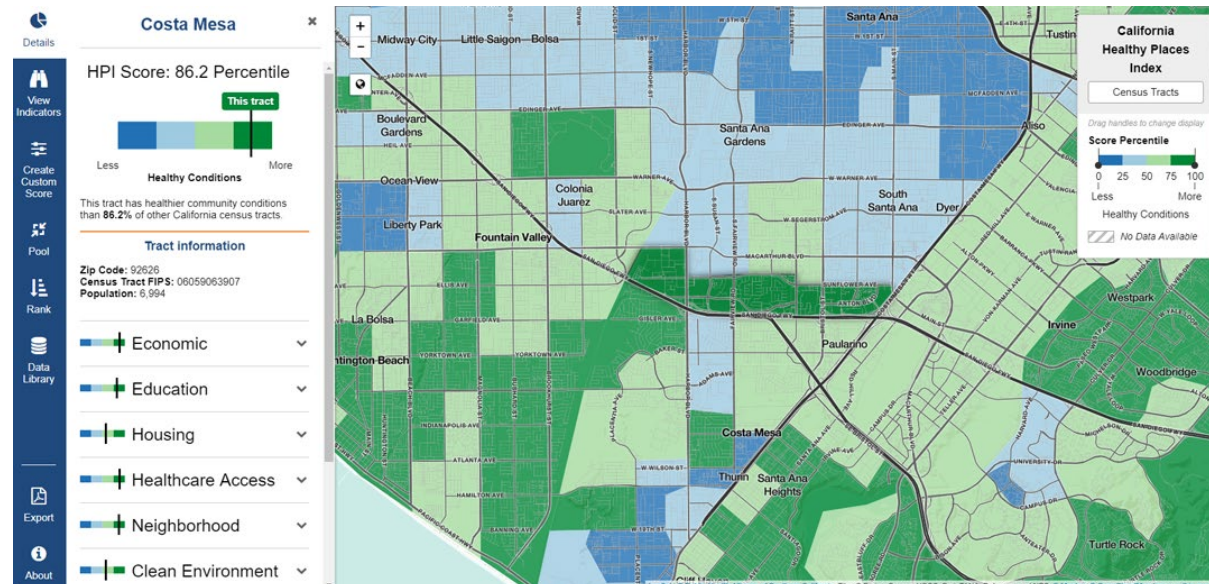
<https://www.gov.ca.gov/newsroom/>

[California Healthy Places Index](https://healthyplacesindex.org/) (HPI) is a composite measure of socioeconomic opportunity applied to census tracts that includes 25 individual indicators across economic, social, education, transportation, housing, environmental and neighborhood sectors.

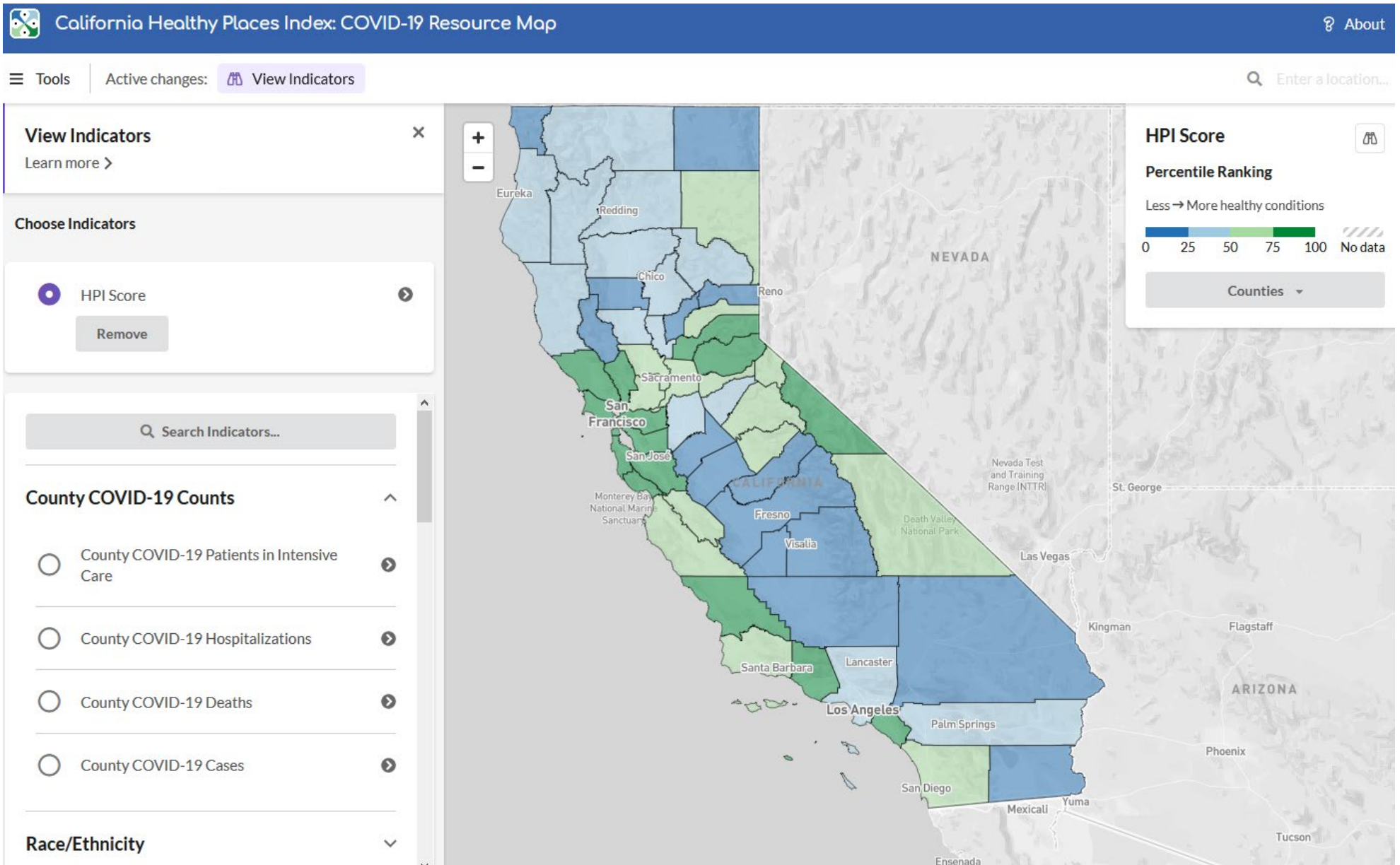
Each county's census tracts will be divided into quartiles based on HPI. While the state's lowest quartile HPI census tracts are home to 24% of Californians, they account for 40% of COVID-19 cases. Consequently, the Blueprint for a Safer Economy framework includes two measures to address the public health impact of populations mixing more as counties move through tiers and more activities are allowed.

The metrics threshold is a population of 106,000 the rules that counties must comply if they have a greater or fewer than or equal this number.

<https://healthyplacesindex.org/>

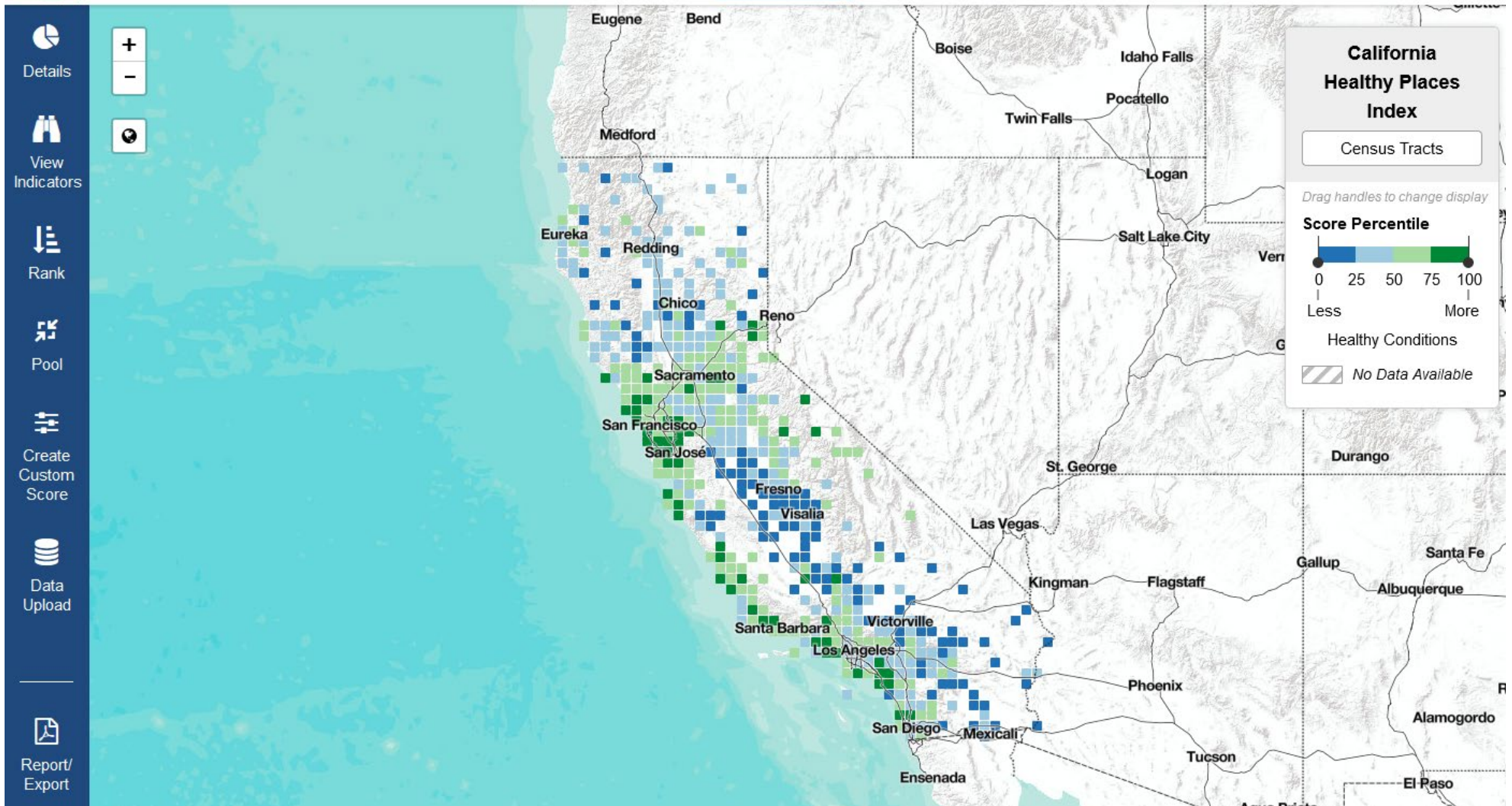








Q Enter a location...



## Statewide industry guidance to reduce risk

<https://covid19.ca.gov/industry-guidance/#top>

<https://www.cdph.ca.gov/Programs/CID/DCDC/Pages/Guidance.aspx>

## Data models

<https://covid19.ca.gov/data-and-tools/>

<https://covid19.ca.gov/safer-economy>

## Current tier assignments as of October 6, 2020

All data and tier assignments are updated weekly every Tuesday.

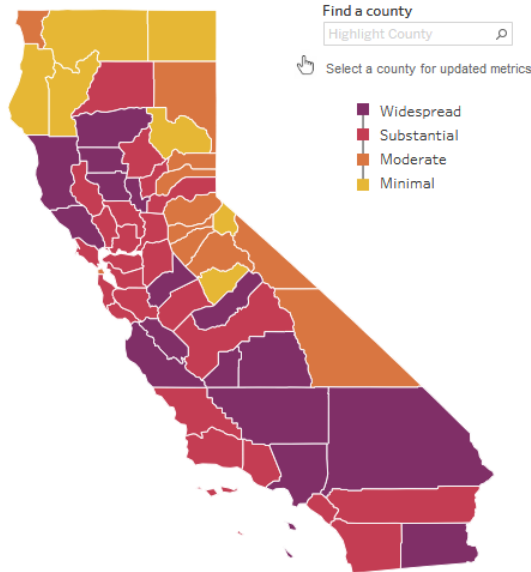
### Statewide metrics

**7.1**

New COVID-19 positive cases per day per 100K

**3.2%**

Positivity rate



## California COVID-19 By The Numbers

October 6, 2020

Numbers as of October 5, 2020

### CALIFORNIA COVID-19 SPREAD

**828,461 (+1,677)**  
CASES

#### Ages of Confirmed Cases

- 0-17: 86,370
- 18-49: 496,431
- 50-64: 156,312
- 65+: 88,464
- Unknown/Missing: 884

#### Gender of Confirmed Cases

- Female: 417,819
- Male: 403,885
- Unknown/Missing: 6,757

**16,177 (+28)**

Fatalities

#### Hospitalizations

Confirmed COVID-19  
**2,344/681**  
Hospitalized/In ICU

Suspected COVID-19  
**831/128**  
Hospitalized/In ICU

For county-level hospital data:  
[bit.ly/hospitalsca](http://bit.ly/hospitalsca)

Your actions save lives.

For county-level data:  
[data.chhs.ca.gov](http://data.chhs.ca.gov)  
[covid19.ca.gov](https://covid19.ca.gov)



	Higher Risk → Lower Risk of Community Disease Transmission			
	Widespread Tier 1	Substantial Tier 2	Moderate Tier 3	Minimal Tier 4
Measure*				
Adjusted Case Rate for Tier Assignment** (Rate per 100,000 excluding prison cases, 7 day average with 7 day lag)	>7	4-7	1-3.9	<1
Testing Positivity*** (Excluding prison cases, 7 day average with 7 day lag)	>8%	5-8%	2.4-9%	<2%

**State Officials Announce Latest COVID-19 Facts**

October 6, 2020 - The California Department of Public Health (CDPH) today announced the most recent statistics on COVID-19.

**State Officials Announce Latest COVID-19 Facts**

October 5, 2020 - The California Department of Public Health (CDPH) today announced the most recent statistics on COVID-19.

**State Officials Announce Latest COVID-19 Facts**

October 4, 2020 - The California Department of Public Health (CDPH) today announced the most recent statistics on COVID-19.

**State Officials Announce Latest COVID-19 Facts**

October 3, 2020 - The California Department of Public Health (CDPH) today announced the most recent statistics on COVID-19.

**State Officials Announce Latest COVID-19 Facts**

October 2, 2020 - The California Department of Public Health (CDPH) today announced the most recent statistics on COVID-19.

**State Officials Announce Latest COVID-19 Facts**

October 1, 2020 - The California Department of Public Health (CDPH) today announced the most recent statistics on COVID-19.





## Riverside County Data

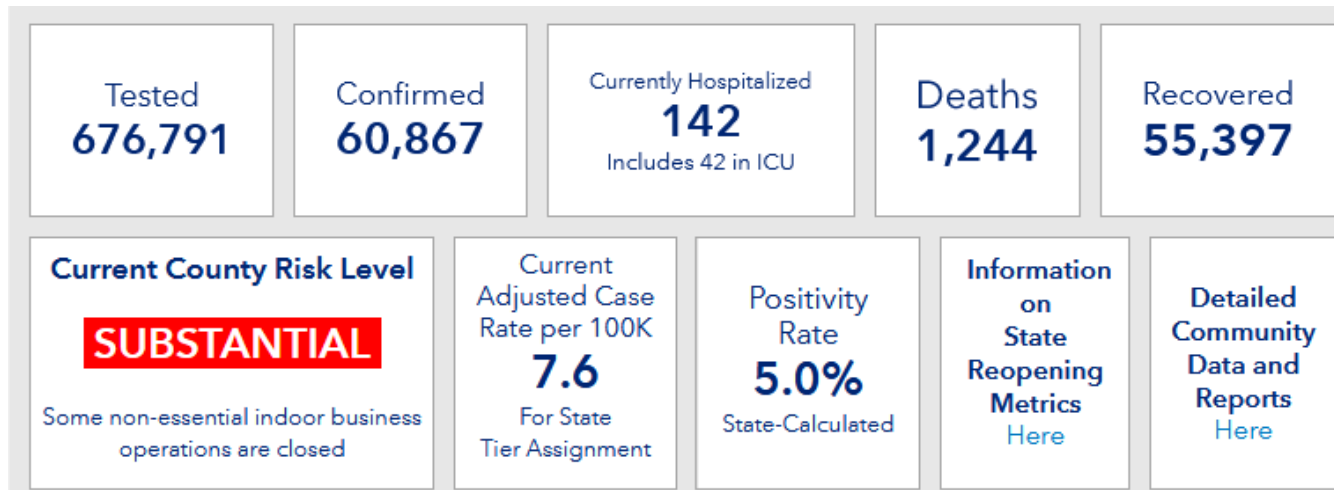
### RUHS Public Health News:

- [Rental Assistance Pop-Up Event in Hemet on Oct. 7](#) - October 5, 2020
- Riverside County enters state's red tier, more businesses resume indoor operations [English](#) / [Spanish](#) - September 23, 2020
- [Third round of business assistance grant applications to open Sept. 16 with expanded eligibility](#) - September 14, 2020
- More residents needed for COVID testing to slow the spread, move into red tier [English](#) / [Spanish](#) - September 10, 2020
- Riverside County health officials urge residents to take precautions because of smoke, ash from fires [English](#) / [Spanish](#) - September 8, 2020
- [Continue coronavirus safety measures during holiday weekend](#) - September 3, 2020

Dashboard -Click [here](#) for more detailed city/community data and reports


### Daily Epidemiology Summary updated 10-06-2020

[https://www.rivcoph.org/Portals/0/Documents/CoronaVirus/October/Dashboard/1/10.6.20Public%20Daily\\_COVID-19\\_Updates.pdf?ver=2020-10-06-134908-820&timestamp=1602017640522](https://www.rivcoph.org/Portals/0/Documents/CoronaVirus/October/Dashboard/1/10.6.20Public%20Daily_COVID-19_Updates.pdf?ver=2020-10-06-134908-820&timestamp=1602017640522)





# Weather

 National Weather Service San Diego, California		Weather Threats Outlook 11 AM PDT Tuesday, October 6, 2020						
County	Zone	Tue 10/6	Wed 10/7	Thu 10/8	Fri 10/9	Sat 10/10	Sun 10/11	Mon 10/12
San Diego	Beach/Marine	Dense Fog	None	None	None	Showers	Showers	None
	Coast	None	None	None	None	Showers	Showers	None
	Valleys	Warm	None	None	None	Showers	Showers	None
	Mountains	Warm	Warm	Breezy	Breezy	Showers Windy	Showers Breezy	Weak Santa Ana
	Deserts	Very Warm	Very Warm	Warm	None	Windy	None	None
Orange	Beach	Dense Fog	None	None	None	Showers	Showers	None
	Coast	None	None	None	None	Showers	Showers	None
	Inland	Warm	None	None	None	Showers	Showers	None
	Mountains	None	None	None	None	Showers	Showers	None
Riverside	Inland Empire	Warm	Warm	None	None	Showers	Showers	None
	Mountains	Warm	Warm	Breezy	Breezy	Showers Windy	Showers Breezy	Weak Santa Ana
	Desert	Very Warm	Very Warm	Warm	None	Windy	None	None
San Bernardino	Inland Empire	Warm	Warm	None	None	Showers	Showers	None
	Mountains	Warm	Warm	Breezy	Breezy	Showers Windy	Showers Breezy	Weak Santa Ana
	Desert	Very Warm	Very Warm	Warm	None	Windy	Breezy	Weak Santa Ana
Impact Threat Levels		None	Low	Medium	High	Extreme		

Latest hazard threat table: <https://www.wrh.noaa.gov/sqx/event/dsstable.php>

<https://www.weather.gov/forecastpoints#>

# Wildfire

<https://www.latimes.com/wildfires-map/>

