

# NORCO COLLEGE

## GUIDED PATHWAYS & EQUITY SCHOOLS REVISION PROJECT TEAM

Update

### Did you miss the Town Hall?

## NEW SCHOOLS

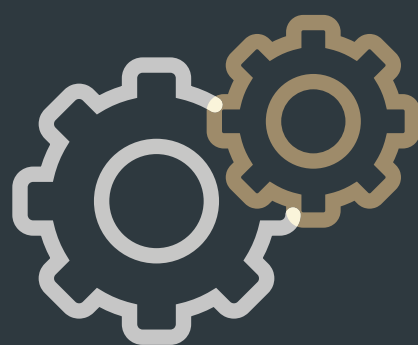
COHESIVE OPERATIONAL & STUDENT-FACING STRUCTURE

### Current Structure

- Schools (student-facing)
  - Arts & Humanities
  - Business & Management
  - Social & Behavioral Sciences
  - STEM
- Academic Departments (operational & Strategic)
  - BEIT
  - Science/KIN
  - Math
  - AHWL
  - SBS
- Discipline Meetings

### Proposed Structure

- New "schools" would also serve as new Academic departments
  - Academic chair reassignments (contractual)
  - IDS assignments
  - Department meetings
- Each new school would have a Success Team:
  - Discipline Faculty
  - 1 FTE Counseling Faculty
  - 1 FT Ed Advisor/Student Success Coach
  - 4 Peer Advisors (10 hours per week each)



### Dean of STEM

- School of Natural & Health Sciences ( $n = 2,085$ ) 19 FT & 37 PT
- School of Math, Engineering, Computer & Game Science ( $n = 1,684$ ) 20 FT & 29 PT

**TOTAL students = 3,769**  
**TOTAL faculty = 39 FT/66 PT**

### Dean of Arts, Humanities & Social Sciences

- School of Social & Behavioral Sciences ( $n = 1,564$ ) 11 FT & 26 PT
- School of Humanities & Languages ( $n = 395$ ) 27 FT (+2 LIB) & 52 PT
- School of Visual & Performing Arts ( $n = 426$ ) 7 FT & 22 PT

**TOTAL students = 2,385**  
**TOTAL faculty = 45(+2 LIB)/100 PT**  
*\*GUI faculty not included in faculty #*

### Dean of Career Education

- School of Applied Technologies ( $n = 816$ ) 5 FT & 10 PT + 12 for apprenticeship
- School of Business & Management ( $n = 1,879$ ) 7 FT & 18 PT
- School of Human & Public Services ( $n = 764$ ) 4 FT & 11 PT

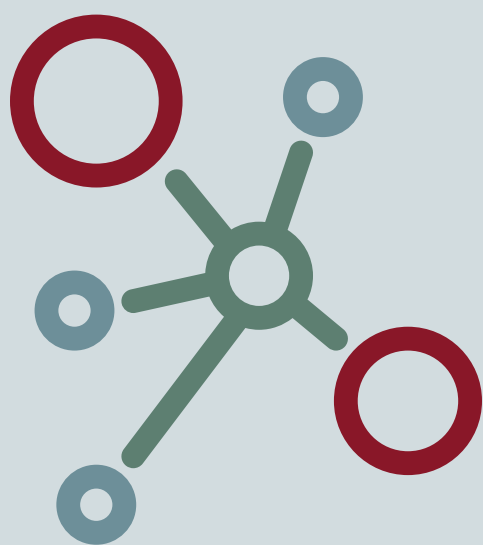
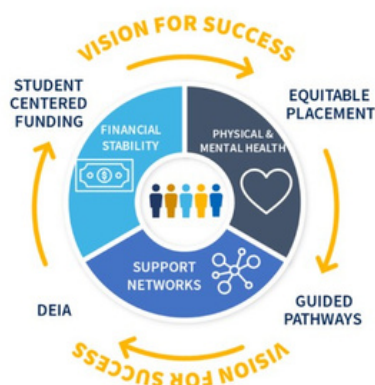
**TOTAL students = 3,452**  
**TOTAL faculty = 16 FT/39 PT + 12 apprenticeship**

**Additional workload of CTE faculty and justification for additional Dean support:** apprenticeship programs, IETTC planning workgroup, interdisciplinary planning, STOKOE center, two additional off-site teaching locations, Perkins grant work, discipline and regional advisory boards, IEDRC faculty liaison, CNUSD CTE Expo, dual enrollment and community outreach, workforce and economic development, CTE advocacy, City of Corona internships. CTE job fairs. ADJ specific: public safety district hiring committees, Chancellor's Public Safety Task Force, City of Norco CERT program, POST/CCC Public Safety Workgroup (AB 89), FEMA programs, etc.

## Success Team Support

SUCCESS TEAMS & ENGAGEMENT ACTIVITIES

- Success Teams proactively push into the student experience throughout their college journey:
  - Connection
  - Entry
  - Progress
  - Completion



## Give Us Feedback



<https://tinyurl.com/y56a8swz>

Here's the link to the recording

<https://norcollege.mediasite.com/mediasite/Play/116f1cdf96ce4ce095433294a5c79db81d>