

# NORCO COLLEGE

## PROGRAM ASSESSMENT SUMMARY

AOE- COMMUNICATIONS, MEDIA &  
LANGUAGES  
FALL 2019

674

Students

70%

Benchmark

90%

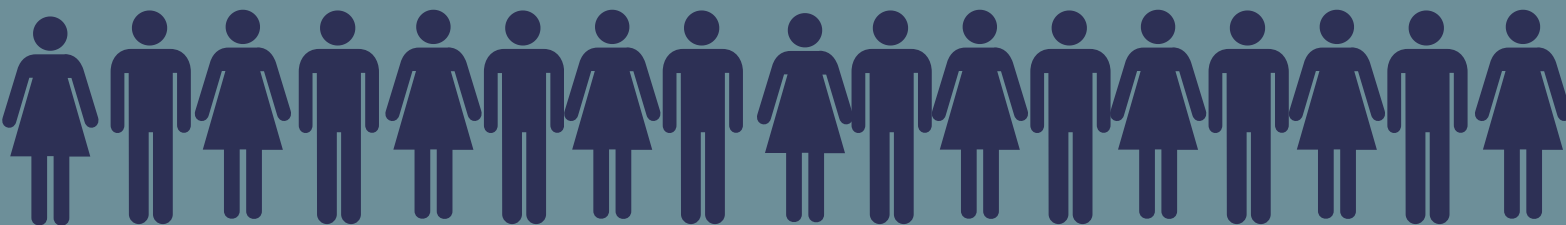
Scored 2 or  
above

Percent of all students that scored a 2  
or above (competency is passing or  
above) on PLO 1,2,4 and 5.

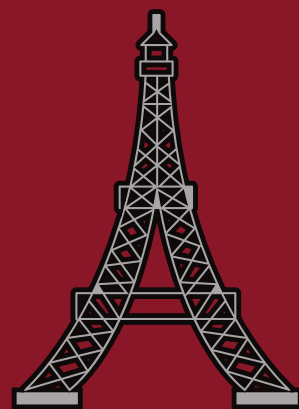
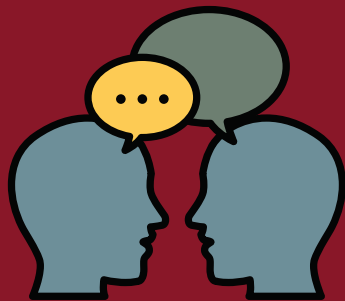
Students with more  
units completed in  
the program scored  
significantly higher  
on PLO-5.



**Disproportionate Impact**  
There were no low performing  
groups.



Courses Involved  
COM-1,9,12, FRE-1,  
and SPA- 1,2,3.



3.88

AVERAGE  
NUMBER OF  
UNITS  
COMPLETED  
IN PROGRAM

31

SECTIONS  
ASSESSED

[WWW.NORCOCOLLEGE.COM](http://WWW.NORCOCOLLEGE.COM)

## PLO ASSESSMENT SUMMARY

**PROGRAM: AOE Communications, Media and Languages PLO 1**

PLO(S) ASSESSED: Analyze college level texts to understand and apply themes and evidence in appropriate communication formats.

COURSES INVOLVED: COM-1.

ASSESSMENT METHOD: Based on the rubric below, rated each student in class on an artifact (test/quiz, project, assignment, etc.) that mapped to above PLO:

*0- NO EVIDENCE OF COMPETENCY*

*1 - VERY LIMITED EVIDENCE OF COMPETENCY, NOT PASSING*

*2 - EVIDENCE OF COMPETENCY IS LIMITED, BUT PASSING*

*3 - ADEQUATE EVIDENCE OF COMPETENCY*

*4 - STRONG EVIDENCE OF COMPETENCY*

**BENCHMARK:**

- At least 70% of the advanced group in my program will score 2.0 or above

**SUMMARY OF PROGRAM ASSESSMENT RESULTS**

Total number of students involved in PLO assessment:	126
Average number of total units completed:	17.52
Average number of units completed in program:	3.58
Percent of all students at 2.0 or above on PLO Assessment:	84.9%

PLO Score	Frequency	Percent
0	13	10.3%
1	6	4.8%
2	13	10.3%
3	47	37.3%
4	47	37.3%

**YOUR PROGRAM WAS DIVIDED INTO 2 GROUPS DEFINED AS FOLLOWS**

- GROUP 1—Program Beginners: 3 or less units completed in the program at the beginning of the fall semester.
- GROUP 2—Program (almost) Completers: More than 3 units completed in the program at the beginning of the fall semester.

	% AT OR ABOVE 2 ON PLO	AVERAGE PLO SCORE	TOTAL # IN GROUP
GRP 1-PROGRAM BEGINNERS	84.3%	2.76	70
GRP 2-PROGRAM (almost) COMPLETERS	85.7%	3.00	56

Group 2 average PLO assessment score was not significantly higher than Group 1. (t=1.075, p=.284)

## PLO ASSESSMENT SUMMARY

\* If a group's average PLO assessment score was significantly higher than the other group, there was less than 5% probability that this occurred by chance. We are inferring that a significantly higher average PLO assessment score for a group indicates greater mastery of the PLO.

### SUMMARY OF PROGRAM ASSESSMENT RESULTS DISAGGREGATED BY ETHNICITY, AGE, & GENDER

		% AT OR ABOVE 2 ON PLO	TOTAL # IN GROUP	DISPROPORTIONATE IMPACT (Not calculated if less than 20 students in group)
ETHNICITY	African-American	87.5%	16	
	Asian	91.7%	12	
	Hispanic	77.6%	67	.81
	White	96.0%	25	1.00
	Filipino			
	American Indian	100%	1	
	Pacific Islander			
	Two or more	100%	3	
	Unknown	100%	2	
AGE	24 and below	81.4%	97	.84
	25 and above	96.6%	29	1.00
	Unknown			
GENDER	Female	81.5%	65	.92
	Male	88.3%	60	1.00
	Unknown	100%	1	

\*Disproportionately impacted group

## PLO ASSESSMENT SUMMARY

**PROGRAM: AOE Communications, Media and Languages PLO 2**

PLO(S) ASSESSED: Evaluate purpose and audience to create well-developed, supported, and stylistically fluent responses in written or verbal form.

COURSES INVOLVED: COM-1.

ASSESSMENT METHOD: Based on the rubric below, rated each student in class on an artifact (test/quiz, project, assignment, etc.) that mapped to above PLO:

*0- NO EVIDENCE OF COMPETENCY*

*1 - VERY LIMITED EVIDENCE OF COMPETENCY, NOT PASSING*

*2 - EVIDENCE OF COMPETENCY IS LIMITED, BUT PASSING*

*3 - ADEQUATE EVIDENCE OF COMPETENCY*

*4 - STRONG EVIDENCE OF COMPETENCY*

BENCHMARK:

- At least 70% of the advanced group in my program will score 2.0 or above

SUMMARY OF PROGRAM ASSESSMENT RESULTS

Total number of students involved in PLO assessment:	144
Average number of total units completed:	18.23
Average number of units completed in program:	3.75
Percent of all students at 2.0 or above on PLO Assessment:	89.6%

PLO Score	Frequency	Percent
0	13	9%
1	2	1.4%
2	31	21.5%
3	38	26.4%
4	60	41.7%

YOUR PROGRAM WAS DIVIDED INTO 2 GROUPS DEFINED AS FOLLOWS

- GROUP 1—Program Beginners: 3 or less units completed in the program at the beginning of the fall semester.
- GROUP 2—Program (almost) Completers: More than 3 units completed in the program at the beginning of the fall semester.

	% AT OR ABOVE 2 ON PLO	AVERAGE PLO SCORE	TOTAL # IN GROUP
GRP 1-PROGRAM BEGINNERS	89.2%	2.81	74
GRP 2-PROGRAM (almost) COMPLETERS	90.0%	3.00	70

Group 2 average PLO assessment score was not significantly higher than Group 1. (t=.926, p=.356)

## PLO ASSESSMENT SUMMARY

\* If a group's average PLO assessment score was significantly higher than the other group, there was less than 5% probability that this occurred by chance. We are inferring that a significantly higher average PLO assessment score for a group indicates greater mastery of the PLO.

### SUMMARY OF PROGRAM ASSESSMENT RESULTS DISAGGREGATED BY ETHNICITY, AGE, & GENDER

		% AT OR ABOVE 2 ON PLO	TOTAL # IN GROUP	DISPROPORTIONATE IMPACT (Not calculated if less than 20 students in group)
ETHNICITY	African-American	94.1%	17	
	Asian	92.3%	13	
	Hispanic	83.5%	79	.84
	White	100%	28	1.00
	Filipino			
	American Indian	100%	1	
	Pacific Islander			
	Two or more	100%	4	
	Unknown	100%	2	
AGE	24 and below	87.3%	110	.90
	25 and above	97.1%	34	1.00
	Unknown			
GENDER	Female	89.5%	76	.99
	Male	90.0%	67	1.00
	Unknown	100%	1	

\*Disproportionately impacted group

## PLO ASSESSMENT SUMMARY

**PROGRAM: AOE Communications, Media and Languages PLO 4**

PLO(S) ASSESSED: Recognize and understand the role of nonverbal, verbal, interpersonal, visual, mass media, and cultural indicators inherent in different communication mediums.

COURSES INVOLVED: COM-9 and COM-12.

ASSESSMENT METHOD: Based on the rubric below, rated each student in class on an artifact (test/quiz, project, assignment, etc.) that mapped to above PLO:

*0- NO EVIDENCE OF COMPETENCY*

*1 - VERY LIMITED EVIDENCE OF COMPETENCY, NOT PASSING*

*2 - EVIDENCE OF COMPETENCY IS LIMITED, BUT PASSING*

*3 - ADEQUATE EVIDENCE OF COMPETENCY*

*4 - STRONG EVIDENCE OF COMPETENCY*

**BENCHMARK:**

- At least 70% of the advanced group in my program will score 2.0 or above

**SUMMARY OF PROGRAM ASSESSMENT RESULTS**

Total number of students involved in PLO assessment:	200
Average number of total units completed:	29.42
Average number of units completed in program:	4.13
Percent of all students at 2.0 or above on PLO Assessment:	87.5%

PLO Score	Frequency	Percent
0	13	6.5%
1	12	6.0%
2	34	17.0%
3	69	34.5%
4	72	36.0%

**YOUR PROGRAM WAS DIVIDED INTO 2 GROUPS DEFINED AS FOLLOWS**

- GROUP 1—Program Beginners: 4 or less units completed in the program at the beginning of the fall semester.
- GROUP 2—Program (almost) Completers: More than 4 units completed in the program at the beginning of the fall semester.

	% AT OR ABOVE 2 ON PLO	AVERAGE PLO SCORE	TOTAL # IN GROUP
GRP 1-PROGRAM BEGINNERS	88.1%	2.93	126
GRP 2-PROGRAM (almost) COMPLETERS	86.5%	2.78	74

Group 2 average PLO assessment score was not significantly higher than Group 1. (t=-0.851, p=.396)

## PLO ASSESSMENT SUMMARY

\* If a group's average PLO assessment score was significantly higher than the other group, there was less than 5% probability that this occurred by chance. We are inferring that a significantly higher average PLO assessment score for a group indicates greater mastery of the PLO.

### SUMMARY OF PROGRAM ASSESSMENT RESULTS DISAGGREGATED BY ETHNICITY, AGE, & GENDER

		% AT OR ABOVE 2 ON PLO	TOTAL # IN GROUP	DISPROPORTIONATE IMPACT (Not calculated if less than 20 students in group)
ETHNICITY	African-American	88.9%	9	
	Asian	71.4%	14	
	Hispanic	84.9%	119	.88
	White	96.4%	55	1.00
	Filipino			
	American Indian	100%	1	
	Pacific Islander			
	Two or more	100%	1	
	Unknown	100%	1	
AGE	24 and below	86.8%	152	.97
	25 and above	89.6%	48	1.00
	Unknown			
GENDER	Female	89.1%	129	1.00
	Male	85.7%	70	.96
	Unknown	0%	1	

\*Disproportionately impacted group

## PLO ASSESSMENT SUMMARY

**PROGRAM: AOE Communications, Media and Languages PLO 5**

PLO(S) ASSESSED: Understand how socioeconomic and cultural factors work in constructing knowledge in different forms of communication.

COURSES INVOLVED: SPA-1, FRE-1, SPA-2 and SPA-3.

ASSESSMENT METHOD: Based on the rubric below, rated each student in class on an artifact (test/quiz, project, assignment, etc.) that mapped to above PLO:

*0- NO EVIDENCE OF COMPETENCY*

*1 - VERY LIMITED EVIDENCE OF COMPETENCY, NOT PASSING*

*2 - EVIDENCE OF COMPETENCY IS LIMITED, BUT PASSING*

*3 - ADEQUATE EVIDENCE OF COMPETENCY*

*4 - STRONG EVIDENCE OF COMPETENCY*

**BENCHMARK:**

- At least 70% of the advanced group in my program will score 2.0 or above

**SUMMARY OF PROGRAM ASSESSMENT RESULTS**

Total number of students involved in PLO assessment:	204
Average number of total units completed:	31.19
Average number of units completed in program:	5.83
Percent of all students at 2.0 or above on PLO Assessment:	94.6%

PLO Score	Frequency	Percent
0	3	1.5%
1	8	3.9%
2	24	11.8%
3	53	26.0%
4	116	56.9%

**YOUR PROGRAM WAS DIVIDED INTO 2 GROUPS DEFINED AS FOLLOWS**

- GROUP 1—Program Beginners: 4 or less units completed in the program at the beginning of the fall semester.
- GROUP 2—Program (almost) Completers: More than 4 units completed in the program at the beginning of the fall semester.

	% AT OR ABOVE 2 ON PLO	AVERAGE PLO SCORE	TOTAL # IN GROUP
GRP 1-PROGRAM BEGINNERS	91.9%	3.19	101
GRP 2-PROGRAM (almost) COMPLETERS	98.1%	3.47	103

Group 2 average PLO assessment score was significantly higher than Group 1. (t=2.136, p<.05)



## PLO ASSESSMENT SUMMARY

\* If a group's average PLO assessment score was significantly higher than the other group, there was less than 5% probability that this occurred by chance. We are inferring that a significantly higher average PLO assessment score for a group indicates greater mastery of the PLO.

### SUMMARY OF PROGRAM ASSESSMENT RESULTS DISAGGREGATED BY ETHNICITY, AGE, & GENDER

		% AT OR ABOVE 2 ON PLO	TOTAL # IN GROUP	DISPROPORTIONATE IMPACT (Not calculated if less than 20 students in group)
ETHNICITY	African-American	91.7%	12	
	Asian	100%	15	
	Hispanic	93.5%	138	.94
	White	100%	32	1.00
	Filipino			
	American Indian	100%	1	
	Pacific Islander	100%	2	
	Two or more	50.0%	2	
	Unknown	100%	2	
AGE	24 and below	93.2%	146	.95
	25 and above	98.3%	58	1.00
	Unknown			
GENDER	Female	96.3%	135	1.00
	Male	91.2%	68	.95
	Unknown	100%	1	

\*Disproportionately impacted group