

Program Name:

Supply Chain Technology

This program is designed to be completed in

18 Months

This program will cost

In-State Tuition and Fees:	\$1472.00
Out of State Tuition and Fees:	\$8960.00
Books and Supplies (Estimate):	\$1553.00

**If completed in normal time. There may be additional costs for living expense.
These costs were accurate at the time of posting, but may have changed.*

Student Loan Debt

Of the students who completed this program within normal time, the typical graduate leaves with an average student loan debt of:

\$0.00**Program Licensure Requirements**

The following states do not have licensure requirements for this profession: **California**

For more information about graduation rates, loan repayment rates, and post-enrollment earnings about this institution and other postsecondary institutions please click here: <https://collegescorecard.ed.gov>

Supply Chain Automation

32-33 unit certificate • 60 unit degree

Supply Chain Automation is a rapidly-emerging discipline that supports the automated warehousing industry. This program provides students with the skills and hands-on training needed to install, operate, support, upgrade or maintain the software, hardware, automated equipment and systems that support the supply chain.

Required Courses (to earn certificate)

SCT/SCA-1 Introduction to Automated Warehousing (3 units)

An industrial technology overview course covering the basic knowledge and skills needed for supply chain technicians to successfully work in an automated distribution center.

ELC/ELE/MAN-73 Electric Motors and Transformers (4 units)

Enables electricians to understand and effectively wire most standard DC motors, servos and steppers, as well as many AC motors, including single and poly-phase units, from fractional horsepower to multi-horsepower, industrial giants.

ELC/ELE/MAN-74 Industrial Wiring and Controls (4 units)*

Industrial controls and electrical wiring of modern facilities, manufacturing, or warehousing.

ELC/ELE-77 Electrical Theory (3 units)*

An introduction to electrical theory

DFT/ENE/ELE-27 Technical Communications (3 units)*

Procedures for organizing and presenting technical data through informal and formal documents and presentations.

DFT/ENE-51 Blueprint Reading (2 units)*

A beginning course in the study of blueprints and their interpretation, types of projection, symbols and abbreviations.

ENE-62 Math for Automated Systems (3 units)

Course concepts from arithmetic, algebra, geometry and scientific notation, extended and applied to problems in automation technology from electrical and mechanical engineering, including metal work, welding, and building energy systems.

OR

MAT-36 Trigonometry (4 units)*

Prerequisite: MAT-35 and 53 or qualifying placement level
The study of trigonometric functions, their inverses and their graphs; identities and proofs related to trigonometric expressions.

MAN-55 OSHA Standards for General Industry (1 unit)

This course covers OSHA policies, procedures, and standards, as well as safety for general industry and health principles.

MAN-60 Hydraulic and Pneumatic Systems (3 units)

Advisory: ENE-60 or MAT 52.

Basics of hydraulic and pneumatic systems including physical properties of liquids under pressure.

ELE/MAN-64 Programmable Logic Controllers (3 units)*

Advisory: ELE-10

Fundamentals of programmable logic controllers, with an emphasis on introductory programming of PLCs.

ELE-26 Microcontrollers (3 units)*

Advisory: ELE-25
Computer number systems, codes, and arithmetic functions.

**this class transfers toward one or more CSUSB or CalPoly majors. Visit www.assist.org or the Counseling office for details.*

Supply Chain Automation

Supply Chain Automation

Tuition \$1,472-\$1,518 • Duration of Study: 16 months

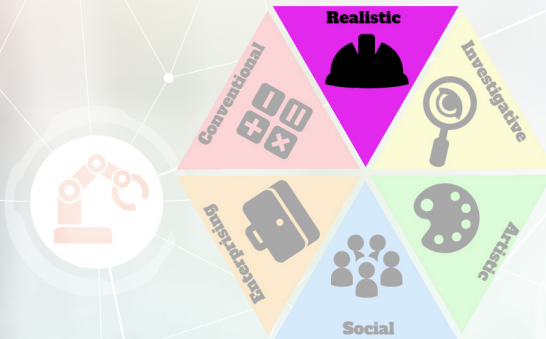
An Associate of Science Degree in Supply Chain Automation will be awarded upon completion of the required courses (32-33 units), plus the General Education requirements. Please refer to the Norco College Catalog or visit the Counseling Center.

Job & Wage Information

- Industrial Machinery Mechanic
Wage Range*: \$17.04-37.41
10% increase expected in CA 2016-2026; 2,480 openings annually
More information: <http://bit.ly/IndustrialMachinery>
- Logistics Analyst
Wage Range*: \$23.63-57.67
11% increase expected in CA 2016-2026; 1,890 openings annually
More information: <http://bit.ly/LogisticsNC>
- Supply Chain Manager
Wage Range*: \$33.58-88.19
11% increase expected in CA 2016-2026; 8,820 openings annually
More information: <http://bit.ly/SupplyChainNC>

*2018, Riverside/Ontario/San Bernardino Metro Area

What type of interests might be a good fit for this career choice?



Realistic

People who have athletic or mechanical ability and prefer to work with objects, machines and tools. Preference for working with things over people.

For more information on careers that fit this category of interests, visit the Career Center in the Center for Student Success.

What's Your School?

NORCO COLLEGE SCHOOL OF
**Science, Technology,
Engineering & Mathematics**

Visit www.norcollege.edu/STEM
for more information about this program.
View gainful employment information at:
www.norcollege.edu/academicaffairs/cte