

ELEANOR ROOSEVELT & NORCO COLLEGE DUAL ENROLLMENT



**FALL 2022
CLASS SCHEDULE
AUGUST 22 - DECEMBER 17**

APPLY NOW!

If you are a new Dual Enrollment student, or you did not take a class at Norco this semester, you must apply for FALL 2022.

- 1- Apply to Norco College
- 2- Submit your Parent Approval Form
- 3- Register for classes

Important: ALL new students must take GUI-47 to participate in the Dual Enrollment Program.



GUI-47

CAREER EXPLORATION & LIFE PLANNING

In depth career and life planning: Topics include extensive exploration of one's values, interests and abilities; life problem-solving and self-management skills; adult development theory and the changes that occur over the life span; self-assessment including identifying one's skills and matching personality with work. An intensive career investigation; decision making, goal setting and job search strategies, as well as resume writing and interviewing skills will also be addressed. This course is designed to assist those students considering the transition of a career change or undecided about the selection of a college major. 3 Units

Choose one of the following sections:

**Mondays & Wednesdays 6:55am-8:20am
Section # 39146**

**Mondays & Wednesdays 4:00pm-5:25pm
Section # 39143**

**Tuesdays & Thursdays 6:55am-8:20am
Section # 39147**

**Tuesdays & Thursdays 4:00pm-5:25pm
Section # 38651**

**Umoja Students Only - Section #39128
Hybrid: Wednesdays 4:15-5:40pm + Online**

ELEANOR ROOSEVELT & NORCO COLLEGE DUAL ENROLLMENT



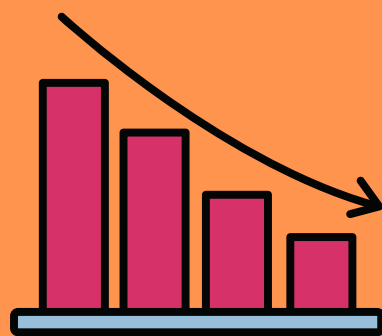
**FALL 2022
CLASS SCHEDULE
AUGUST 22 - DECEMBER 17**



MAT-1A (38836) CALCULUS I

Functions, limits, continuity, techniques and applications of differentiation, the Fundamental Theorem of Calculus, and basic integration. 4 Units (UC/CSU)

**Mondays & Wednesdays
4:00pm-6:30pm**



MAT-12 (38813) STATISTICS

A comprehensive study of measures of central tendency and variation, correlation and linear regression, probability, the normal distribution, the t-distribution, the chi-square distribution, estimation, testing of hypotheses, analysis of variance, and the application of statistical software to data, including the interpretation of the relevance of the statistical findings. Applications using data from business, education, health science, life science, psychology, and the social sciences will be included. 4 Units (UC/CSU)

**Mondays, Tuesdays,
Wednesdays, Thursdays
7:00am-8:05am**
*Class starts 8/15/22
*Class starts later on Wednesdays



MUS-19 (39181) MUSIC APPRECIATION

A broad survey of music in the Western world, including terminology for describing musical elements, forms, and styles. Organized to acquaint students with the roles of music and musicians in society and with representative musical selections through listening. 3 Units (UC/CSU)

**Tuesdays & Thursdays
4:00pm-5:25pm**

COM-9 (39140) INTERPERSONAL COMMUNICATION

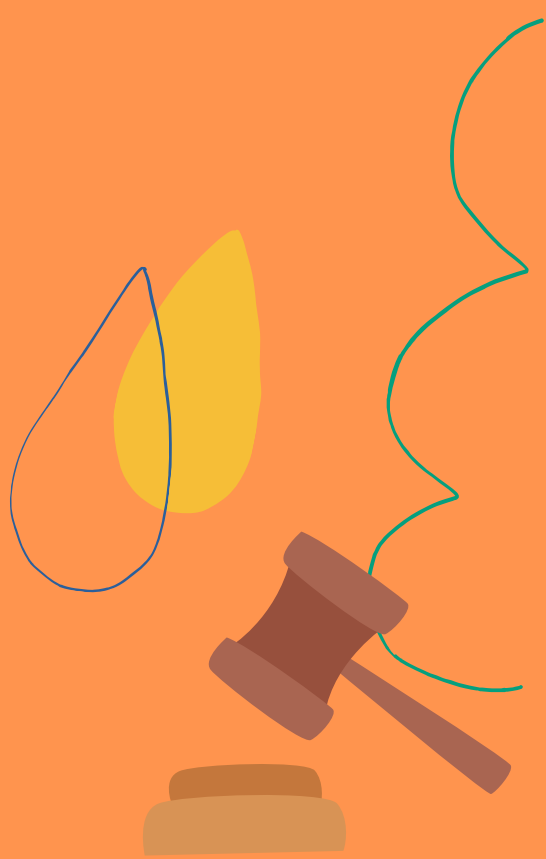
Analyzes the dynamics of the two-person communication process in relationships. Students study values, communication models, listening, verbal and nonverbal communication, perception, self-concept, self-disclosure, management of emotions, relationship theories and conflict management. 3 Units. (UC/CSU)

ONLINE

ELEANOR ROOSEVELT & NORCO COLLEGE DUAL ENROLLMENT



FALL 2022
CLASS SCHEDULE
AUGUST 22 - DECEMBER 17



BUS-14 (39111) SOCIAL MEDIA AND ONLINE DIGITAL MEDIA PROMOTIONS FOR ENTREPRENEURS

Introduction to social media and online digital promotional tools used to help promote entrepreneurs with their online presence and to successfully establish their brands. 3 Units (CSU)

ONLINE

ENG-1B (38577) CRITICAL THINKING & WRITING

Students will critically read diverse literary texts in order to compose inquiry-driven writing. Students will write a minimum of 7500 words of assessed writing. Classroom instruction integrates writing lab activities 4 Units (UC/CSU)

ONLINE



BIO-10 (39180) LIFE SCIENCE PRINCIPLES

An introduction to the principles of life sciences through the study of basic biological concepts of living organisms involving structure, behavior, evolutionary relationships and the social and environmental implications of life science. 3 Units (UC/CSU)

ONLINE


ELEANOR ROOSEVELT & NORCO COLLEGE DUAL ENROLLMENT



**FALL 2022
CLASS SCHEDULE
AUGUST 22 - DECEMBER 17**

COURSES OPEN TO ALL DUAL ENROLLMENT HIGH SCHOOL STUDENTS

The following courses are open to all HS students that participate in our Norco College Dual Enrollment Program. Students may register for any of these courses with HS Counselor approval. These courses are fully **ONLINE**



ADJ-8 (39249) JUVENILE LAW & PROCEDURES

The organization, functions and jurisdiction of juvenile agencies; the processing and detention of juveniles; juvenile case disposition; juvenile statutes and court procedures. 3 Units (UC/CSU)

ONLINE



EAR-20 (38455) CHILD GROWTH & DEVELOPMENT

This introductory course examines the major physical, psychosocial, and cognitive/language developmental milestones for children, both typical and atypical, from conception through adolescence. Emphasis on interactions between maturational processes and environmental factors. While studying developmental theory and investigative research methodologies, students will observe children, evaluate individual differences and analyze characteristics of development at various stages. Outside observations required. 3 Units (UC/CSU)

ONLINE