

JURUPA VALLEY & NORCO COLLEGE DUAL ENROLLMENT



**SPRING 2022
CLASS SCHEDULE**
February 14 - June 10



APPLY NOW!

If you are a new Dual Enrollment student, or you did not take a class at Norco this semester, you must apply for Spring 2022.

- 1- Apply to Norco College
- 2- Submit your Parent Approval Form
- 3- Register for classes

Important: ALL students must take GUI-47 or ILA-3 to participate in the Dual Enrollment Program.



BIO-45 **SURVEY OF HUMAN ANATOMY & PHYSIOLOGY**

An introductory and survey course of structural and functional aspects of the human body. Emphasis is placed on cell organization, human tissues, and discussion of each of the human systems. 3 Units

Mondays & Wednesdays
12:15PM-1:45PM

SOC-1 **INTRO. TO SOCIOLOGY**

An introduction to the basic concepts relating to the study of society. Includes investigation into the foundations of sociology including its overall perspective, theoretical orientations, and research methodology; the foundations of social life including the components of culture, social interaction and the process of socialization, groups, organizations, and deviance; economic social inequality based upon class, race, sex, and age; social institutions; and dimensions of social change 3 Units

Mondays & Wednesdays
12:15PM-1:45PM

GUI-47 **CAREER EXPLORATION & LIFE PLANNING**

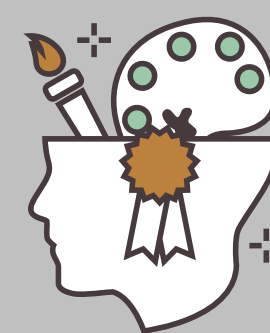
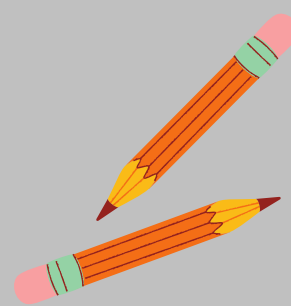
In depth career and life planning: Topics include extensive exploration of one's values, interests and abilities; life problem-solving and self-management skills; adult development theory and the changes that occur over the life span; self-assessment including identifying one's skills and matching personality with work. An intensive career investigation; decision making, goal setting and job search strategies, as well as resume writing and interviewing skills will also be addressed. This course is designed to assist those students considering the transition of a career change or undecided about the selection of a college major. 3 Units

Mondays & Wednesdays
12:15pm-1:45pm

JURUPA VALLEY & NORCO COLLEGE DUAL ENROLLMENT



**SPRING 2022
CLASS SCHEDULE**
February 14 - June 10



ENG-1A ENGLISH COMPOSITION

Emphasizes skills in critical reading, and writing, including research. Integrated reading and writing assignments respond to various rhetorical situations. Students will produce a minimum of 7500 words of assessed writing. Classroom instruction integrates writing lab activities.
4 Units

ONLINE CLASS

ENG-1B CRITICAL THINKING & WRITING

Students will critically read diverse literary texts in order to compose inquiry-driven writing. Students will write a minimum of 7500 words of assessed writing. Classroom instruction integrates writing lab activities
4 Units

ONLINE CLASS

CIS-79 INTRO. TO ADOBE ILLUSTRATOR

Introduction to Adobe Illustrator, involving creating artwork for logos, illustrations, posters, perspective drawing and web content. Development of a working knowledge of creating graphic images and typography along with color use. 3 Units.

**Mondays, Tuesdays,
Wednesdays, Fridays
1:15pm-2:15pm**

JURUPA VALLEY & NORCO COLLEGE DUAL ENROLLMENT



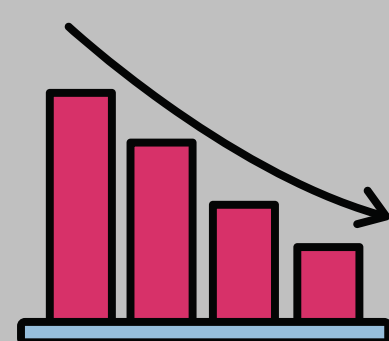
**SPRING 2022
CLASS SCHEDULE**
February 14 - June 10



MAT-1B CALCULUS II

Techniques of integration, applications of integration, improper integrals, parametric equations, polar coordinates, infinite sequences and series.
4 Units

**Mondays, Tuesdays,
Wednesdays, Fridays**
7:00am-8:15am



PSY-1 GENERAL PSYCHOLOGY

Historical and philosophical antecedents of contemporary psychology; the scientific study of behavior and mental processes as systemized in learning, motivation, emotion, personality, intelligence, and thought. 3 Units

Tuesdays & Thursdays
12:15pm-1:45pm



COM-1 PUBLIC SPEAKING

Prepares students to compose (develop outlines and research) and present a minimum of four speeches, including informative and persuasive presentations in front of a live audience. Emphasis will include: different purposes of speaking, types of speeches and organizational patterns, topic choice and audience adaptation, rhetorical principles, development and support of sound reasoning and argument, theories of persuasion, application of ethics in public speaking, listening skills, and theory and principles of effective delivery. 3 Units

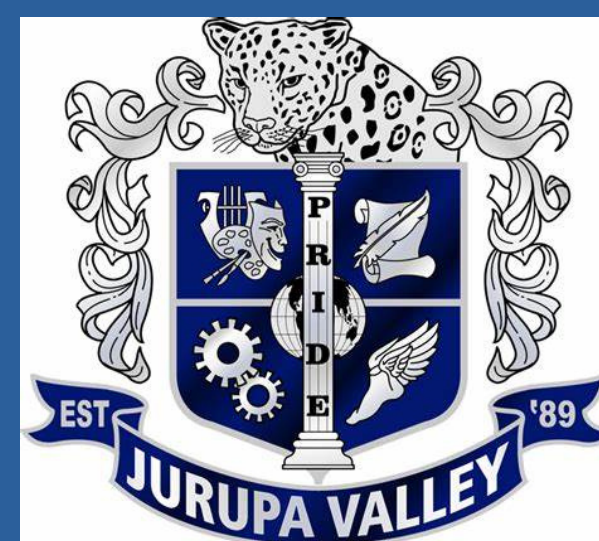
Tuesdays & Thursdays
12:15pm-1:45pm



JURUPA VALLEY & NORCO COLLEGE DUAL ENROLLMENT



**SPRING 2022
CLASS SCHEDULE**
February 14 - June 10



COURSES OPEN TO ALL DUAL ENROLLMENT HIGH SCHOOL STUDENTS

The following courses are open to all HS students that participate in our Norco College Dual Enrollment Program. Students may register for any of these courses with HS Counselor approval. These courses are fully **ONLINE**



ADJ-2 PRINCIPLES & PROCEDURES OF THE JUSTICE SYSTEM

An examination and analysis of due process in criminal proceedings from pre-arrest through trial and appeal utilizing statutory law and state and constitutional precedents. 54 hours lecture. 3 Units (CSU only)

EAR-42 CHILD, FAMILY & COMMUNITY

An examination of the developing child in a societal context which focuses on the interrelationships of family, school, and community and emphasizes historical and socio-cultural factors. The processes of socialization and identity development will be highlighted. 3 Units (CSU only)

ILA-3 STUDENT RESILIENCE

This participatory course trains students how to attain, foster, and utilize skills that may support academic success in the face of adversity. The course includes theories of resiliency, workshops on strategies for resilience and academic success, problem-solving applications, and network building. 1 Unit