



## Library & Learning Resource Center Advisory Committee

**Minutes for October 10, 2023**

**12:50-1:50pm**

**Library Room 108**

### **Committee Members (16 total):**

Hayley Ashby, Nicole Capps, Miguel Castro, Elisa Chung, Gabriela Cortez, Cheryl Cox, Joseph DeGuzman, Andres Elizalde, Vivian Harris (Faculty Co-Chair), Daren Koch, Damon Nance (Administrative Co-Chair), Khosrow Rad, José Sentmanat, Mitzi Sloniger, Marianne Stefanous, William Whalen

**Absent:** Hayley Ashby, Nicole Capps, Elisa Chung, Cheryl Cox, Joseph DeGuzman, Damon Nance, Jocelyn Oliva, Marianne Stefanous

**Quorum: 9**

**Subject to Brown Act: Yes**

### **1. Call to Order**

- Meeting called to order at 12:50pm

### **2. Action Items**

#### **2.1 Approval of Agenda**

1. 1<sup>st</sup> Sloniger, 2<sup>nd</sup> Sentmanat, passed by consensus

#### **2.2 Approval of May 25, 2023 Minutes**

1. 1<sup>st</sup> Koch, 2<sup>nd</sup> Rad, passed by consensus

#### **2.3 Approval of 2023-2024 LLRCAC Charter**

1. 1<sup>st</sup> Sentmanat, 2<sup>nd</sup> Whalen, passed by consensus

### **3. Information/Discussion Items**

#### **3.1 Library Events (Damon Nance)**

1. Celebrate Books & Libraries Open Mic Poetry workshop with Corey Cofer is being held today, October 10, during college hour in the library.
2. The Read 2 Succeed Student Panel featuring *Brown Enough* by Christopher Rivas will be hosted by Men of Color and Puente students on Thursday, October 19 @ 12:50-1:50pm in CSS-217.
3. The Poetry Performance will be held in the library on Tuesday, November 7 @ 12:50-1:50pm.
4. Christopher Rivas will be at Norco College in person on Thursday, November 16 from 12:50-3pm in CSS-217. He will be hosting the Read 2 Succeed event and signing copies of his book.

#### **3.2 Associated Students of Norco College Report (Jocelyn Oliva)**

1. No report

#### **3.3 Learning Resource Center Report (Daren Koch)**

1. [Tutorial Services](#) has increased the number of tutors during the busiest hours of the

day.

2. According to the reports below, the data shows that success rates are higher when students receive tutoring for their courses.

#### 3.4 Writing & Reading Center Report (Nicole Capps)

1. No report

#### 4. **Good of the Order**

#### 5. **Adjournment**

- Meeting adjourned at 1:32pm

#### **Next Meeting**

**Date:** November 14, 2023

**Time:** 12:50-1:50pm

**Location:** LIB 108

#### **Mission Statement**

The Library & Learning Resource Center Advisory Committee, a standing committee of the Academic Senate, serves as an active and collaborative forum to foster student success, strategic planning, and sustained continuous improvement of the academic support services in the Library and Learning Resource Center through recommendations, in order to uphold the overall mission of Norco College.

### **Tutorial 20-21 and 21-22**

A One-way ANCOVA was conducted to determine a statistically significant difference between grades of students who attended tutorial compared to students in the same sections, controlling for one previous year's GPA. Summer 2020-Spring 2022 tutorial students were compared to all other students in the same sections. Their prior year GPA was calculated and students without prior enrollments were excluded from the analysis.

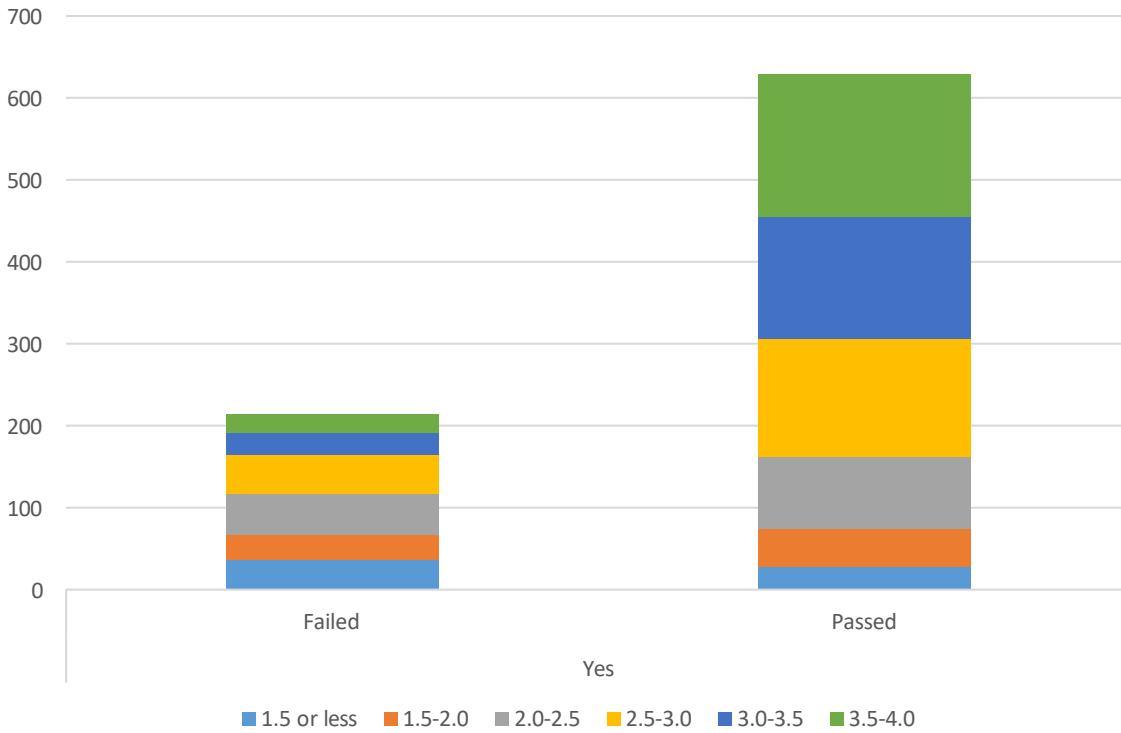
Grades were converted to a GPA type scale to perform the ANCOVA (A/P=4, B=3, C=2, D=1, F/FW/NP/DR/W/EW=0)

There was a significant effect of tutorial on grades after controlling for one previous year's GPA,  $F=30.926$ ,  $p<.01$ . The effect size was small to medium ( $d=0.304$ ).

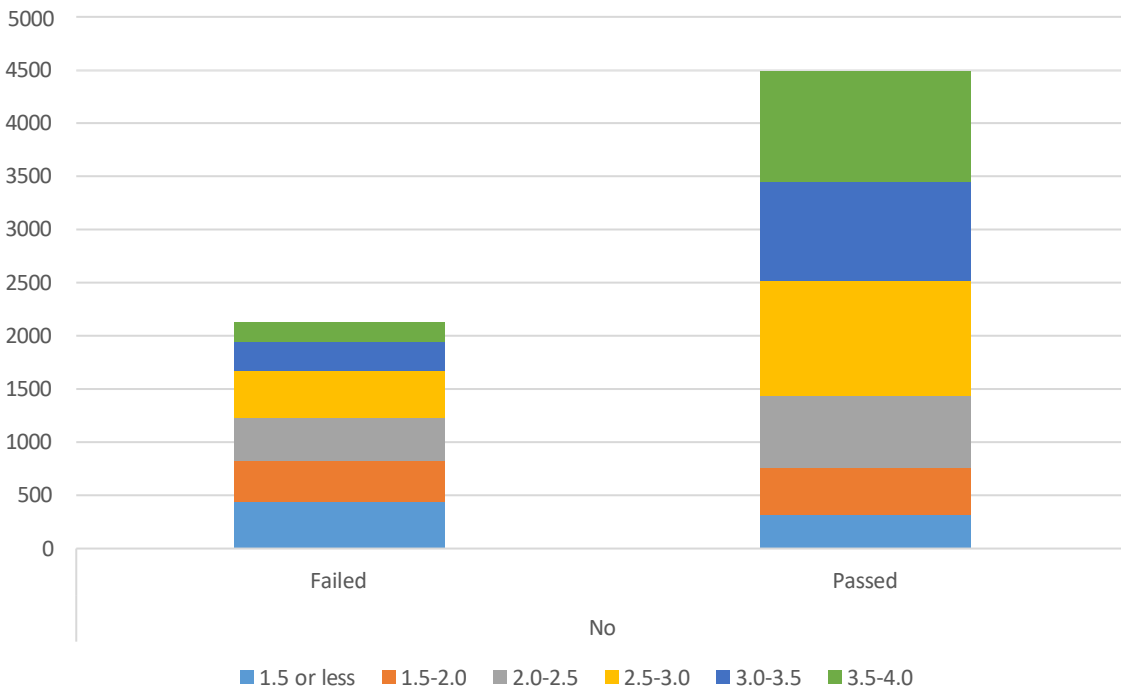
<b>Tutorial</b>	<b>Prior GPA</b>	<b>Success in Course</b>
<b>No</b>	1.5 or less	35.6%
	1.5-2.0	45.7%
	2.0-2.5	52.2%
	2.5-3.0	62.4%
	3.0-3.5	73.5%
	3.5-4.0	83.1%
	Overall	66.4%
	<b>Yes</b>	1.5 or less
1.5-2.0		68.5%
2.0-2.5		69.2%
2.5-3.0		78.5%
3.0-3.5		79.3%
3.5-4.0		88.8%
Overall		79.3%

\*Includes same enrollments as ANOVCA calculation

Attended tutorial- comparison of prior year GPA



Did not attend tutorial- comparison of prior year GPA



## Tutorial Services, Success Rates by Ethnicity

<b>2021-2022</b>					
<b>Ethnicity</b>	<b>Yes</b>		<b>No</b>		<b>Difference</b>
American Indian or Alaska Native					
Asian	82.80%	93	72.81%	938	<b>9.99%</b>
Black or African American	60.00%	40	58.14%	344	<b>1.86%</b>
Hispanic/Latino	74.88%	419	58.15%	3996	<b>16.73%</b>
Native Hawaiian or Other Pacific Islander			56.25%	32	
Two or More Races	73.08%	27	59.81%	209	<b>13.27%</b>
Unknown/Non-Respondent			74.51%	51	
White	87.41%	135	69.57%	1299	<b>17.84%</b>
<b>Overall Total</b>	77.70%		62.50%		<b>15.20%</b>
<b>2020-2021</b>					
<b>Ethnicity</b>	<b>Yes</b>		<b>No</b>		<b>Difference</b>
American Indian or Alaska Native			45.45%	11	
Asian	88.57%	71	77.94%	855	<b>10.63%</b>
Black or African American	70.45%	49	58.54%	344	<b>11.91%</b>
Hispanic/Latino	80.28%	372	62.37%	4045	<b>17.91%</b>
Native Hawaiian or Other Pacific Islander			33.33%	26	
Two or More Races	85.71%	15	68.00%	182	<b>17.71%</b>
Unknown/Non-Respondent			70.37%	86	
White	81.94%	162	70.83%	1362	<b>11.11%</b>
<b>Overall Total</b>	81.20%		65.90%		<b>15.30%</b>
<b>2019-2020</b>					
<b>Ethnicity</b>	<b>Yes</b>		<b>No</b>		<b>Difference</b>
American Indian or Alaska Native			64.00%	25	
Asian	82.58%	178	74.82%	1251	<b>7.76%</b>
Black or African American	70.69%	116	59.46%	629	<b>11.23%</b>
Hispanic/Latino	73.26%	965	62.84%	7276	<b>10.42%</b>
Native Hawaiian or Other Pacific Islander			66.67%	51	
Two or More Races	80.65%	31	62.16%	185	<b>18.49%</b>
Unknown/Non-Respondent	92.31%	13	74.00%	50	<b>18.31%</b>
White	78.83%	326	71.37%	2627	<b>7.46%</b>
<b>Overall Total</b>	75.70%		65.80%		<b>9.90%</b>
<b>2018-2019</b>					
<b>Ethnicity</b>	<b>Yes</b>		<b>No</b>		<b>Difference</b>
American Indian or Alaska Native			39.02%	41	
Asian	77.11%	201	72.40%	1815	<b>4.71%</b>
Black or African American	63.01%	146	57.99%	795	<b>5.02%</b>
Hispanic/Latino	71.87%	1006	62.40%	9815	<b>9.47%</b>
Native Hawaiian or Other Pacific Islander	#####	10	71.67%	60	<b>28.33%</b>
Two or More Races	83.33%	24	71.18%	229	<b>12.15%</b>
Unknown/Non-Respondent	90.00%	10	73.97%	73	<b>16.03%</b>
White	74.86%	366	69.94%	3676	<b>4.92%</b>
<b>Overall Total</b>	72.80%		65.10%		<b>7.70%</b>